



PIPE GRAPPLES

HANDLE PIPE EFFICIENTLY

A MODEL FOR EVERY APPLICATION

PG-1—This pipe grapple was designed with a single center stabilizer to keep grapple weight and cost to a minimum. If you need to handle small or medium size pipe, then this is the pipe grapple for you.

PG-2—This unit has dual linked stabilizers for maximum load control. Independent stabilizers are an available option. This pipe grapple is recommended for rough terrain, or when handling long lengths of pipe.

The PG-1 and PG-2 both feature rugged stabilizer beams that pivot on wide bushings and heat treated pins. The hydraulically operated load stabilizer beams provide a steady, even force over the entire load. Rubber coating is installed on the stabilizer beams.

The hydraulics on the PG-1 and PG-2 are first class. Heavy-duty cylinders with chrome plated, induction-hardened, alloy steel rods provide years of dependable service.

Both models are designed for productivity. Pipe grapples are equipped with forged tines. The frame and attaching brackets are made of high-strength alloy steels to keep grapple weight to a minimum. Load centers are kept as close as possible to the boom pivot pins for maximum machine stability and larger loads every pass.



Rockland has been building pipe grapples for over twenty-five years. Put our experience and reputation for quality to work at your pipeyard.



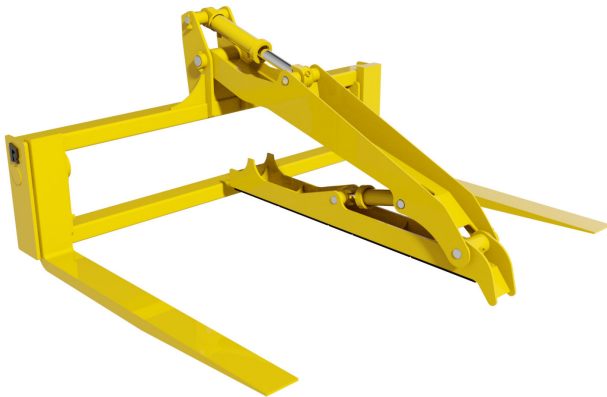
PIPE GRAPPLES

SPECIFICATIONS

| Machine Category | 20 | 30 | 40 | 50 | 60 | 70 |
|------------------------------|--------------------------------------------------------|--------------------------------------------------------|-----------------------------------------------------|-------------------------------------------------------|-------------------------------------------------------|-------------------------------------------------------|
| Width Over Tines (") | 94 <small>2388</small> | 106 <small>2692</small> | 106 <small>2692</small> | 106 <small>2692</small> | 118 <small>2997</small> | 118 <small>2997</small> |
| Overall Width (") | 96 <small>2438</small> | 108 <small>2743</small> | 108 <small>2743</small> | 108 <small>2743</small> | 120 <small>3048</small> | 120 <small>3048</small> |
| Tine Size (") | 2.25 x 6 x 60 <small>57 x 152 x 1524</small> | 2.75 x 7 x 72 <small>70 x 178 x 1829</small> | 3 x 7 x 72 <small>76 x 178 x 1829</small> | 3.5 x 8 x 72 <small>89 x 203 x 1829</small> | 3.5 x 8 x 96 <small>89 x 203 x 2438</small> | 4 x 10 x 96 <small>102 x 254 x 2438</small> |
| Clamp Opening - PG1 - PG2 | 24" 90° | 24" 90° | 30" 90° | 30" 90° | 38" 90° | - 90° |
| PG-1 (lbs.) | 2900 <small>1315</small> | 3045 <small>1381</small> | 3600 <small>1633</small> | 3840 <small>1742</small> | 5725 <small>2597</small> | - |
| PG-2 (lbs.) | 3850 <small>1746</small> | 4375 <small>1984</small> | 4970 <small>2254</small> | 5305 <small>2406</small> | 7510 <small>3407</small> | 8650 <small>3924</small> |

(mm/kg)

Specifications subject to change without notice.



PG-1



PG-2

INSTALLATION INFORMATION

Pipe Grapples mount in place of the standard bucket using factory pins or specified coupler brackets. Jumper hoses and hydraulic cylinders are supplied with both the PG-1 and PG-2 Pipe Grapples. A three-spool valve and boom arm piping are required on the machine to complete the installation of the PG-1 and PG-2.

WARRANTY

Rockland PG Pipe Grapples are guaranteed against failure due to defective design, workmanship or materials for a period of two years or 4000 hours.



Distributed by:

ROCKLAND MANUFACTURING CO.
P O BOX 5
800-458-3773

BEDFORD, PA 15522
www.rocklandmfg.com