



LIGHT MATERIAL U-BLADES

LM COAL • WC WOODCHIP • SL LANDFILL

LM COAL BLADES—PROVEN ON COAL PILES AROUND THE WORLD

For coal pile productivity, the Rockland LM Coal Blade cannot be beat. The length, height, and wing angles of the LM blade were developed specifically for highly productive coal dozing. More tractor horsepower than ever before is dedicated to pushing coal.

Rockland LM Coal Blades feature job-matched cutting edges, high-strength alloy steel moldboards, and rugged box-frame construction for years of dependable service. Knowledgeable coal pile superintendents specify Rockland LM Coal Blades because they know Rockland LM Coal Blades are designed for productivity and built to last.

WC WOODCHIP BLADES THE CHIP PILE CHAMP

Rockland WC Woodchip Blades turn an ordinary tractor into a woodchip moving machine. The Rockland WC is built for one purpose—moving woodchips economically and efficiently. Rockland woodchip blades have proven themselves on chip piles from Canada to Florida.

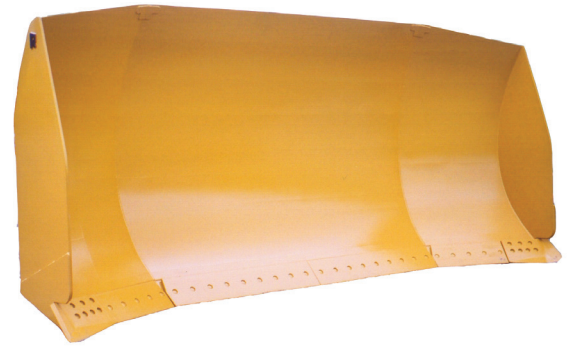
All Rockland WC blades are built of high-strength, weight-saving alloy steel so that most of the tractor's horsepower is spent pushing chips. The extended end plates help contain the load. Moldboard height and width ratio were designed specifically for efficient chip dozing. For maximum productivity and years of dependable service, specify a proven Rockland WC Woodchip Blade.

SL LANDFILL BLADES FOR EFFICIENT TRASH DOZING

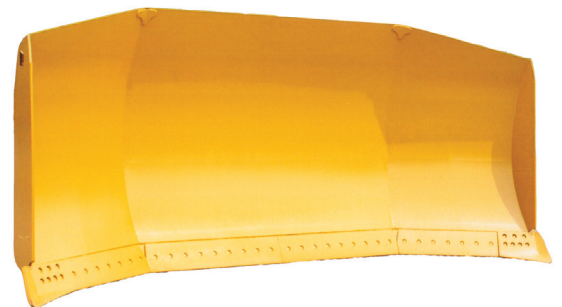
Lower landfill dozing costs with a Rockland SL Landfill Blade. Whether it be pushing large loads of trash and debris or spreading cover, the SL blade improves productivity because these blades were designed specifically for landfill operations.

From the heat-treated, reversible cutting edges to the top of the oversized moldboard, Rockland SL blades prove they mean business. The extra height and visibility "windows" help operators produce more with less effort. Rockland SL Landfill Blades are built entirely of high-strength, weight-saving alloy steel plate for years of maximum productivity and dependable service.

LM



WC



SL



SPECIFICATIONS

LM COAL U-BLADE

Machine	30	40	50	60	60	70	80	80	90	90	100	110	120
Capacity (Yd³)	11.6 8.87	15 11.48	24.5 18.74	32 24.48	38 29.07	45 34.43	48 36.72	56 42.82	56 42.82	60 45.88	82 62.73	95 72.68	100 76.46
Width (")	156 3962	186 4725	216 5486	216 5486	264 6706	264 6706	264 6706	240 6096	264 6706	264 6706	288 7315	288 7315	288 7315
Height (")	62 1524	59 1524	70 1905	83 2108	79 2007	88 2235	91 2311	108 2743	96 2438	102 2591	115 2921	120 3048	133 3378
Wing Angle	25°	25°	25°	30°	30°	30°	30°	30°	30°	30°	30°	30°	30°
Cutting Edges (")	3/4x8 19x203	1x10 25x254	1x10 25x254	1x10 25x254	1x10 25x254	1x10 25x254	1-1/8x13 29x330	1-1/8x13 29x330	1-1/8x13 29x330	1-1/8x13 29x330	1-1/8x13 29x330	1-1/8x13 29x330	1-1/2x13 329x330
Weight (lbs.)	4000 1814	5900 2676	7400 3357	9300 4218	10500 4763	13000 5897	14100 6396	14900 6759	15850 7190	16200 7348	19350 8777	22800 10342	24000 10886

(mm/kg)

Specifications subject to change without notice.

WC WOODCHIP U-BLADE

Machine	25	30	30	40	40	50	60	70	70	80	90	90	100
Capacity (Yd³)	12 9.18	18.4 14.08	20 15.29	23 17.6	27 20.64	36 27.54	50 38.25	60 45.9	68 52.02	75 57.38	90 68.85	96 73.4	120 91.8
Width (")	144 3658	177 4496	168 4267	192 4877	192 4877	219 5563	240 6096	264 6706	264 6706	264 6706	288 7315	288 7315	288 7315
Height (")	63 1600	69 1753	75 1905	74 1880	81 2057	92 2337	100 2540	103 2616	110 2794	118 2997	122 3099	126 3200	144 3658
Wing Angle	25°	25°	25°	25°	25°	25°	30°	30°	30°	30°	30°	30°	30°
Cutting Edges (")	3/4x8 19x203	3/4x8 19x203	3/4x8 19x203	1x10 25x254	1x10 25x254	1x10 25x254	1x10 25x254	1x10 25x254	1x10 25x254	1-1/8x13 29x330	1-1/8x13 29x330	1-1/8x13 29x330	1-1/8x13 29x330
Weight (lbs.)	4200 1905	4800 2177	4900 2223	5800 2631	6300 2858	7400 3357	11000 4990	13500 6124	14500 6577	16000 7258	19200 8709	19400 8800	20000 9072

(mm/kg)

Specifications subject to change without notice.

SL LANDFILL U-BLADE

Machine	25	30	30	40	40	50	60	60	70	70	80	90
Capacity (Yd³)	9.5 7.27	11.6 8.87	16 12.23	21 16.07	24 18.35	34 26.01	40 30.58	45 34.43	50 38.23	54 41.31	56 42.84	70 53.52
Width (")	120 3048	132 3353	152 3861	168 4267	168 4267	204 5182	216 5486	240 6096	240 6096	264 6706	264 6706	264 6706
Height (")	63 1676	66 1727	71 1804	77 1930	83 2108	88 2286	93 2362	94 2388	98 2489	96 2438	100 2540	110 2794
Wing Angle	25°	25°	25°	25°	25°	25°	30°	30°	30°	30°	30°	30°
Cutting Edges (")	3/4x8 19x203	3/4x8 19x203	3/4x8 19x203	1x10 25x254	1x10 25x254	1x10 25x254	1x10 25x254	1x10 25x254	1x10 25x254	1x10 25x254	1-1/8x13 29x330	1-1/8x13 29x330
Weight (lbs.)	3100 1406	3500 1588	3600 1633	5500 2495	5800 22631	7900 3583	9000 4082	10300 4672	11000 4989	13900 6305	14500 6577	16500 7484

(mm/kg)

Specifications subject to change without notice.

INSTALLATION INFORMATION

Rockland Light Material U-Blades come complete with all necessary attaching brackets, ready to mount on standard push beam assemblies using standard factory pins.

WARRANTY

Rockland Light Material U-Blades are guaranteed against failure due to defective design, workmanship, or materials for a period of two years or 4,000 hours.



Distributed by:

ROCKLAND MANUFACTURING CO.
P.O. Box 5 Bedford, PA 15522
800-458-3773 www.rocklandmfg.com