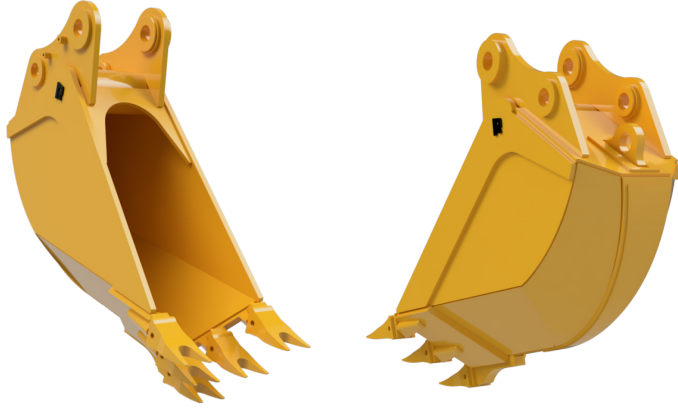




# V-BOTTOM (FROST) BUCKET

PERFECT FOR TIGHTLY PACKED,  
FROZEN, OR ROCKY SOILS



- Maximizes digging performance in frozen earth, caliche, limestone, and shale
- The specialized bucket profile and v-style teeth outproduce standard buckets in frozen and rocky soils
- High-strength alloy steel design ensures maximum abrasion resistance
- Custom logos, colors, and other features upon request

## Specifications\*

Machine Weight (Lbs.)	Width (In.)	Capacity (Yd <sup>3</sup> )	# of Teeth	Weight (Lbs.)
25,000-40,000	18	0.35	5	900
	24	0.40	7	925
	26	0.45	7	975
40,000-52,000	24	0.65	5	1,400
	30	0.87	7	1,600
	36	1.00	7	1,790
52,000-70,000	24	0.96	5	1,750
	30	1.08	7	2,090
	36	1.30	7	2,220
70,000-90,000	30	1.30	5	2,650
	36	1.63	7	2,900
	42	1.95	7	3,200
90,000-110,000	30	1.63	5	3,200
	36	1.95	5	3,630
	42	2.43	7	3,870
110,000-160,000	36	2.80	5	4,770
	42	4.00	5	6,420
	48	4.50	7	6,595

Proudly Made in USA

\*Specifications subject to change without notice.

**WARRANTY** Rockland V-Bottom (Frost) Buckets are guaranteed against failure due to defective design, materials, or workmanship for a period of two years or 4,000 hours.

[WWW.ROCKLANDMFG.COM](http://WWW.ROCKLANDMFG.COM) | [SALES@ROCKLANDMFG.COM](mailto:SALES@ROCKLANDMFG.COM) | 1-800-458-3773