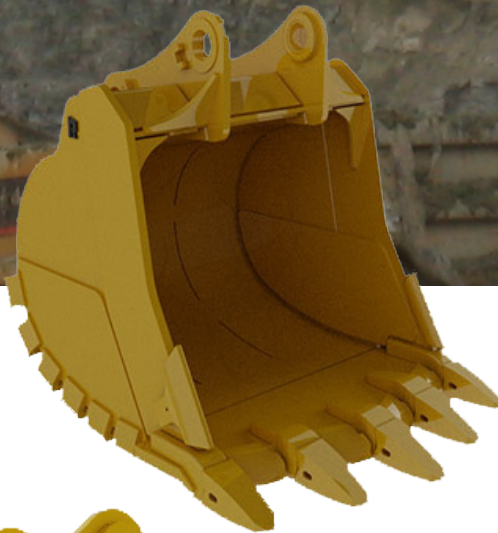




LARGE HEAVY-DUTY & SEVERE SERVICE EXCAVATOR BUCKETS

DESIGNED TO PERFORM. BUILT TO LAST.

**TWO MODELS TO FIT YOUR APPLICATION
HEAVY-DUTY & SEVERE SERVICE BUCKETS**



HEAVY-DUTY BUCKETS & SEVERE SERVICE BUCKETS

- Available in any width, with teeth of your choice
- Critical components built from alloy steel that exceeds 400 BHN
- Wear strips and doublers increase wear life
- Hardfacing available
- All Rockland Heavy-Duty and Severe Service Buckets are covered by Rockland's no-nonsense warranties
- Weld-on sidecutters standard, bolt-on sidecutters optional.
- Severe Service available with spade or straight lip.

TWO MODELS. BOTH BUILT TOUGH.

HD HEAVY-DUTY - SS SEVERE SERVICE

HEAVY-DUTY

Model	Width (")	Capacity (Yd ³)	Weight (lbs.)
EB150 (110,001 - 160,000 Lb Machines)	36 <small>914</small>	2.1 <small>1.61</small>	5425 <small>2460</small>
	42 <small>1067</small>	2.5 <small>1.91</small>	5750 <small>2608</small>
	48 <small>1219</small>	3 <small>2.29</small>	6190 <small>2808</small>
	54 <small>1372</small>	3.4 <small>2.60</small>	7240 <small>3284</small>
	60 <small>1524</small>	3.9 <small>2.98</small>	7325 <small>3323</small>
	66 <small>1676</small>	4.4 <small>3.36</small>	7830 <small>3552</small>
	72 <small>1829</small>	4.9 <small>3.75</small>	8100 <small>3674</small>
	78 <small>1981</small>	4.9 <small>3.75</small>	8900 <small>4037</small>
	84 <small>2134</small>	5.8 <small>4.43</small>	9015 <small>4089</small>
	90 <small>2286</small>	6.3 <small>4.77</small>	9255 <small>4198</small>
96 <small>2438</small>	6.8 <small>5.20</small>	9285 <small>4212</small>	

Model	Width (")	Capacity (Yd ³)	Weight (lbs.)
EB175 (160,001 - 200,000 Lb Machines)	42 <small>1067</small>	2.64 <small>2.02</small>	6425 <small>2914</small>
	48 <small>1219</small>	3.16 <small>2.42</small>	7000 <small>3175</small>
	54 <small>1372</small>	3.69 <small>2.82</small>	7100 <small>3221</small>
	60 <small>1524</small>	4.22 <small>3.23</small>	8710 <small>3951</small>
	60 <small>1524</small>	4.96 <small>3.79</small>	9080 <small>4119</small>
	66 <small>1676</small>	4.76 <small>3.64</small>	9450 <small>4287</small>
	66 <small>1676</small>	5.59 <small>4.27</small>	9600 <small>4355</small>
	72 <small>1829</small>	5.31 <small>4.06</small>	9750 <small>4423</small>
	72 <small>1829</small>	6.23 <small>4.76</small>	9900 <small>4491</small>
	78 <small>1981</small>	5.86 <small>4.48</small>	10830 <small>4912</small>
	78 <small>1981</small>	7.04 <small>5.38</small>	10855 <small>4924</small>
	84 <small>2134</small>	6.4 <small>4.89</small>	10880 <small>4935</small>
96 <small>2438</small>	7.49 <small>5.73</small>	12255 <small>5559</small>	

(mm/kg)

Specifications subject to change without notice.

SEVERE SERVICE

Model	Width (")	Capacity (Yd ³)	Weight (lbs.)
EB150 (110,001 - 160,000 Lb Machines)	36 <small>914</small>	2.1 <small>1.61</small>	6100 <small>2767</small>
	42 <small>1067</small>	2.5 <small>1.91</small>	6170 <small>2799</small>
	48 <small>1219</small>	3 <small>2.29</small>	6600 <small>2994</small>
	54 <small>1372</small>	3.4 <small>2.60</small>	7275 <small>3300</small>
	60 <small>1524</small>	3.9 <small>2.98</small>	7945 <small>3604</small>
	66 <small>1676</small>	4.4 <small>3.36</small>	8625 <small>3912</small>
	72 <small>1829</small>	4.9 <small>3.75</small>	9180 <small>4164</small>
	78 <small>1981</small>	5.3 <small>4.05</small>	9340 <small>4237</small>
	84 <small>2134</small>	5.8 <small>4.43</small>	10670 <small>4840</small>
	90 <small>2286</small>	6.3 <small>4.77</small>	10755 <small>4878</small>
96 <small>2438</small>	6.8 <small>5.20</small>	11020 <small>4999</small>	

Model	Width (")	Capacity (Yd ³)	Weight (lbs.)
EB175 (160,001 - 200,000 Lb Machines)	42 <small>1067</small>	2.64 <small>2.02</small>	8400 <small>3810</small>
	48 <small>1219</small>	3.16 <small>2.42</small>	9100 <small>4128</small>
	54 <small>1372</small>	3.69 <small>2.82</small>	9300 <small>4218</small>
	60 <small>1524</small>	4.22 <small>3.23</small>	9500 <small>4309</small>
	66 <small>1676</small>	4.76 <small>3.64</small>	9800 <small>4445</small>
	72 <small>1829</small>	5.31 <small>4.06</small>	10100 <small>4581</small>
	78 <small>1981</small>	5.86 <small>4.48</small>	10500 <small>4763</small>
	84 <small>2134</small>	6.4 <small>4.89</small>	11200 <small>5080</small>
	96 <small>2438</small>	7.49 <small>5.73</small>	12750 <small>5783</small>

(mm/kg)

Specifications subject to change without notice.

INSTALLATION INFORMATION

All Rockland HD Heavy-duty and SS Severe Service Excavator Buckets mount in place of the standard bucket using factory pins or specified coupler brackets.

WARRANTY

Rockland HD and SS Buckets are guaranteed against failure due to defective design, materials or workmanship for a period of two years or 4000 hours.



Distributed by:

ROCKLAND MANUFACTURING CO.
 P O BOX 5
 800-458-3773
 BEDFORD, PA 15522
www.rocklandmfg.com