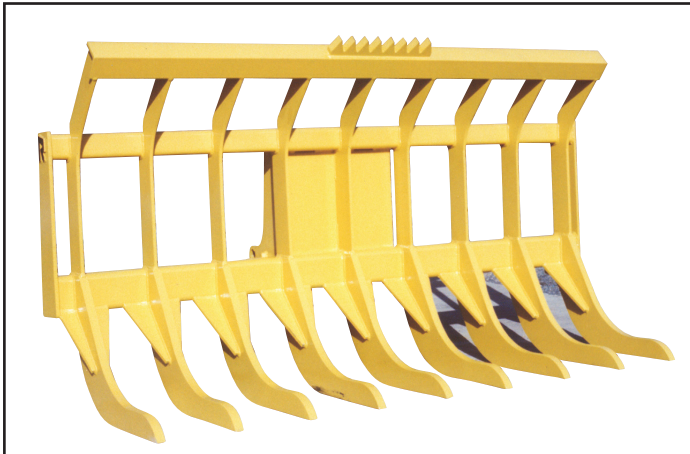




LR LOADER RAKES

MAXIMUM CLEARING EFFICIENCY

LOADERS REALLY PAY OFF ON CLEARING JOBS



LR



LR-C

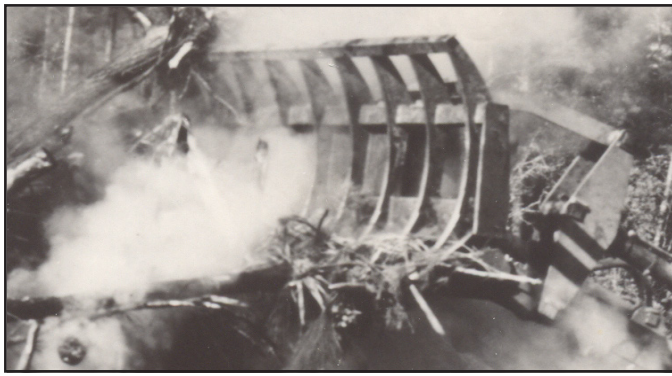
EFFICIENT

Equip your loader with a Rockland LR Loader Rake to take full advantage of the loader's speed, reach and lift. Loaders turn into efficient land clearing machines when equipped with a Rockland LR Loader Rake. When the rake is raised and tilted forward, great leverage can be exerted high on the tree trunk to tip the tree and expose the roots. Stumps can now be dug and loaded with the same machine. Windrows can be built bigger and higher for more complete burning. Cleanup time is drastically reduced.

The LR Loader Rake's long, tough teeth are built of certified high strength, heat-treated alloy steel for years of heavy-duty land clearing service. They are curved for maximum rolling and sifting action, and they project forward of the frame far enough so that loading land clearing debris is fast and efficient. The dig and raking angle are controlled by the loader's bucket rollback cylinders so that operating angle and depth are infinitely adjustable for maximum productivity. At the center of the brush guard is a tree push bar with teeth to keep trees centered when pushing them over. Hydraulically operated clamps are optional on all LR Loader Rakes. They provide positive load control and increase load capacity. Increase land clearing efficiency by demanding a Rockland LR Loader Rake on your next clearing job.

RUGGED

From the high strength, heat-treated alloy steel teeth through the mainframe and attaching brackets, the LR rake reflects design excellence and manufacturing quality. The teeth are designed specifically for land clearing. They dig deep and are tough enough to absorb all the abuse created by clearing land. Rockland LR rakes deliver years of dependable trouble-free performance.



Higher Windrows = Better Burns

Hotter fires are created by higher windrows. Bigger windrows burn better and cleaner. The reach and speed of a loader equipped with a Rockland LR Loader Rake really pays off stacking and piling. Whether it be clearing and burning, or clearing and loading, you need a Rockland LR Loader Rake to turn your loader into an efficient land clearing machine.

SPECIFICATIONS

WHEEL LOADERS

Machine Category	5	10	20	30	40	50	60	70
Raking Width (")	79 <small>2007</small>	90 <small>2286</small>	96 <small>2438</small>	106 <small>2692</small>	110 <small>2794</small>	118 <small>2997</small>	129 <small>3277</small>	139 <small>3531</small>
Number of Teeth	7	8	8	8	8	8	9	9
Tooth Clear Spacing (")	12 <small>305</small>	11 <small>297</small>	12 <small>305</small>	13.5 <small>343</small>	14 <small>356</small>	14.5 <small>368</small>	13 <small>330</small>	14 <small>356</small>
Tooth Penetration (")	12 <small>305</small>	16 <small>406</small>	16 <small>406</small>	16 <small>406</small>	16 <small>406</small>	20 <small>508</small>	20 <small>508</small>	20 <small>508</small>
Height (")	52 <small>1321</small>	56 <small>1422</small>	57 <small>1448</small>	57 <small>1448</small>	57 <small>1448</small>	66 <small>1676</small>	66 <small>1676</small>	71 <small>1803</small>
Weight (lbs.)	1000 <small>454</small>	1450 <small>658</small>	2150 <small>976</small>	2475 <small>1123</small>	2675 <small>1213</small>	3800 <small>1724</small>	4975 <small>2259</small>	6650 <small>3019</small>
Weight with Clamps (lbs.)	1820 <small>720</small>	2285 <small>1030</small>	3255 <small>1465</small>	4300 <small>1935</small>	4345 <small>1955</small>	5775 <small>2600</small>	6270 <small>2820</small>	8880 <small>3428</small>

(mm/kg)

Specifications subject to change without notice.

CRAWLER LOADERS

Machine Category	5	10	20	30	40	50	60	70
Raking Width (")	67 <small>1702</small>	82 <small>2083</small>	88 <small>2235</small>	94 <small>2388</small>	94 <small>2388</small>	108 <small>2743</small>	115 <small>2921</small>	116 <small>2946</small>
Number of Teeth	6	7	7	8	8	8	8	8
Tooth Clear Spacing (")	12.25 <small>311</small>	12.25 <small>311</small>	13 <small>330</small>	11.75 <small>298</small>	11.75 <small>298</small>	13 <small>330</small>	13.5 <small>343</small>	13 <small>330</small>
Tooth Penetration (")	12 <small>305</small>	16 <small>406</small>	16 <small>406</small>	16 <small>406</small>	20 <small>508</small>	20 <small>508</small>	20 <small>508</small>	20 <small>508</small>
Height (")	52 <small>1321</small>	56 <small>1422</small>	57 <small>1448</small>	57 <small>1448</small>	66 <small>1676</small>	66 <small>1676</small>	66 <small>1676</small>	71 <small>1803</small>
Weight (lbs.)	880 <small>400</small>	1320 <small>599</small>	1920 <small>872</small>	2210 <small>1003</small>	3385 <small>1537</small>	3915 <small>1777</small>	4515 <small>2050</small>	5930 <small>2692</small>
Weight with Clamps (lbs.)	1480 <small>672</small>	2235 <small>1015</small>	2600 <small>1180</small>	3485 <small>1582</small>	4700 <small>2134</small>	5465 <small>2481</small>	6630 <small>3010</small>	6830 <small>3101</small>

(mm/kg)

Specifications subject to change without notice.

INSTALLATION INFORMATION

All Rockland LR rakes mount in place of the standard bucket using factory pins or specified coupler brackets. Rakes with clamps require a three-spool valve and boom arm piping to complete the installation.

WARRANTY

Rockland Loader Rakes are guaranteed against failure due to defective design, materials or workmanship for a period of two years or 4000 hours.



Distributed by:

ROCKLAND MANUFACTURING CO.
 P O BOX 5
 800-458-3773
 BEDFORD, PA 15522
 www.rocklandmfg.com