

SPECIFICATIONS

MHS Slag Buckets

Machine Category	40	50	60	70	80	90	100	110
Capacity (yd ³)	2.5	3.5	4.5	5.5	7	7.5	9	10
Width (in.)	112"	120"	126"	136"	148"	156"	176"	188"
Weight (lbs.)	5,125	6,400	7,650	9,600	12,075	16,000	19,375	24,125

CS Slag Buckets

Machine Category	40	50	60	70	80	90	100	110
Capacity (yd ³)	3	4	5	6.5	7.25	8	10	12
Width (in.)	112"	120"	126"	136"	148"	156"	176"	188"
Weight (lbs.)	4,100	5,125	6,150	7,700	9,650	12,800	15,500	19,300

SD Slag Digging Buckets

Machine Category	40	40	50	50	60	60,70	70	70	80	80	80
Capacity (yd ³)	3	3.5	4	4.5	5	5.5	6	6.5	7	7.5	8
Width (in.)	112"	112"	120"	120"	136"	136"	142"	142"	142"	148"	148"
Weight (lbs.)	3,830	4,235	4,860	5,360	6,390	6,750	7,650	8,050	8,225	8,975	9,345

Machine Category	90	90	90	90	90	100	100	100	110	110
Capacity (yd ³)	8.5	9	9.5	10	11	11.5	11.2	12	11	14
Width (in.)	154"	154"	154"	168"	187"	175.2"	175"	175"	187"	187"
Weight (lbs.)	10,355	10,685	11,470	12,165	15,700	16,000	16,000	16,700	15,700	18,000

SL Slag Loading Buckets

Machine Category	40,50	50	50	50	50,60	60	60,70	60,70	70	70	70,80	80	80	80	80,90
Capacity (yd ³)	4	4.25	4.5	4.75	5	5.5	6	6.5	7	7.5	8	8.5	9	9.5	10
Width (in.)	120"	120"	120"	120"	130"	136"	142"	142"	142"	148"	148"	154"	154"	154"	168"
Weight (lbs.)	4,080	4,230	4,380	4,530	4,980	5,310	5,750	6,350	7,050	7,275	7,675	8,380	9,180	9,430	9,510

MOUNTING INFORMATION

Rockland Slag Buckets mount in place of standard buckets using factory pins or coupler brackets.



**ROCKLAND
MANUFACTURING CO.**
P. O. BOX 5
BEDFORD, PA 15522
800-458-3773
www.rocklandmfq.com

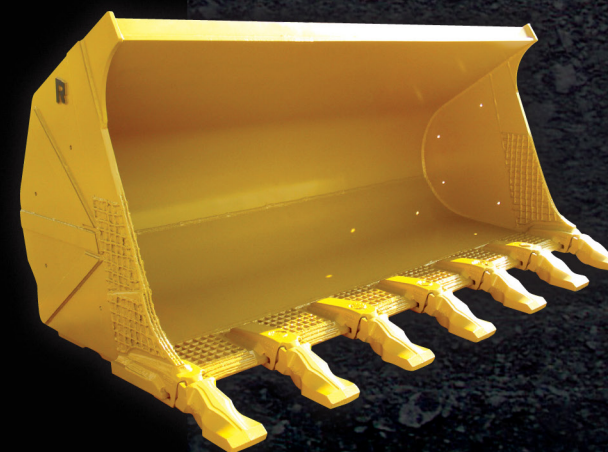
WARRANTY

Rockland HS Buckets are guaranteed against failure due to defective design, workmanship or materials for a period of two years or 4,000 hours.



HOT SLAG BUCKETS

**FOUR MODELS - ONE THAT'S
RIGHT FOR YOUR APPLICATION**



There is no tougher application for wheel loader buckets than handling slag. When you specify a Rockland slag bucket for your operation, you benefit from almost 60 years of bucket design and fabrication experience, combined with knowledge drawn from working closely with many top U.S. slag producers.

ROCKLAND HAS A BUCKET TO MATCH EVERY SLAG OPERATION

MHS SLAG BUCKETS

Designed for severe molten slag

Molten slag reaches temperatures well in excess of 1200° F, and a loader bucket working in these conditions must often withstand extreme changes in temperature as it cycles from being fully loaded to empty. These temperature extremes can crack or wear a standard slag bucket. Rockland MHS Slag Buckets have been engineered to the ideal design and alloy steel material composition to combat both heat and abrasion.

- Designed for slag processors and steel mills
- Thick shell from cutting edge to spill guard for added strength
- Extra-thick end plates absorb heat to eliminate distortion
- Slope-bottom design and replaceable skid pads reduce bottom wear



SD SLAG DIGGING BUCKETS

Designed to dig and load cold, hard slag

Some operations allow slag to cool to ambient temperatures before processing. The result is solid slag that must be broken as it is loaded. The daily abuse buckets endure in these operations can lead to breaking or rapid wear. Rockland SD Slag Digging Buckets are designed to consistently penetrate and load cold piles of slag.

- Spade nose edge design for excellent penetration
- Heavy-duty, heat-treated, hard cutting edges
- Foundations from loader brackets to cutting edge increase bottom strength
- Slope-bottom design minimizes bottom and corner wear
- High-strength, weight-saving alloy steel construction

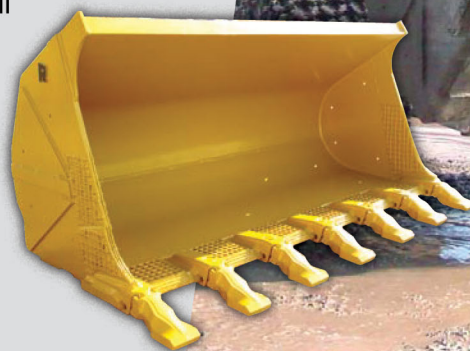


CS SLAG BUCKETS

Designed to break cooling slag

Raw slag material from a slag pot operation is typically lower than 1200° F. Piled for the processor, the outer layers of the hot slag are cooler and often harden to a thick shell. Rockland CS Slag Buckets are designed to break through these top layers of slag, and yet can handle the increased temperature of the buried slag.

- Designed for slag pot operations and processors (versus molten slag)
- Thick shell from cutting edge to spill guard for added strength
- Slope-bottom design and replaceable skid pads reduce bottom wear
- High-strength, weight-saving alloy steel construction
- Thinner top shell available to minimize weight without sacrificing strength



SL SLAG LOADING BUCKETS

Designed to load processed slag

Crushed slag is often highly abrasive, and it can quickly wear standard buckets. It has a lower material density, however, than crushed stone, sand or gravel (approximately 25% less). Rockland SL Slag Loading Buckets are engineered to withstand constant abrasion, and are built with greater capacity than a standard bucket.

- Full-length, replaceable wear strips
- Straight side cutters improve penetration, increase capacity and protect side plates
- Bolt-on, reversible cutting edges or optional bolt-on adapters and segments
- Flat-bottom design increases loading efficiency

