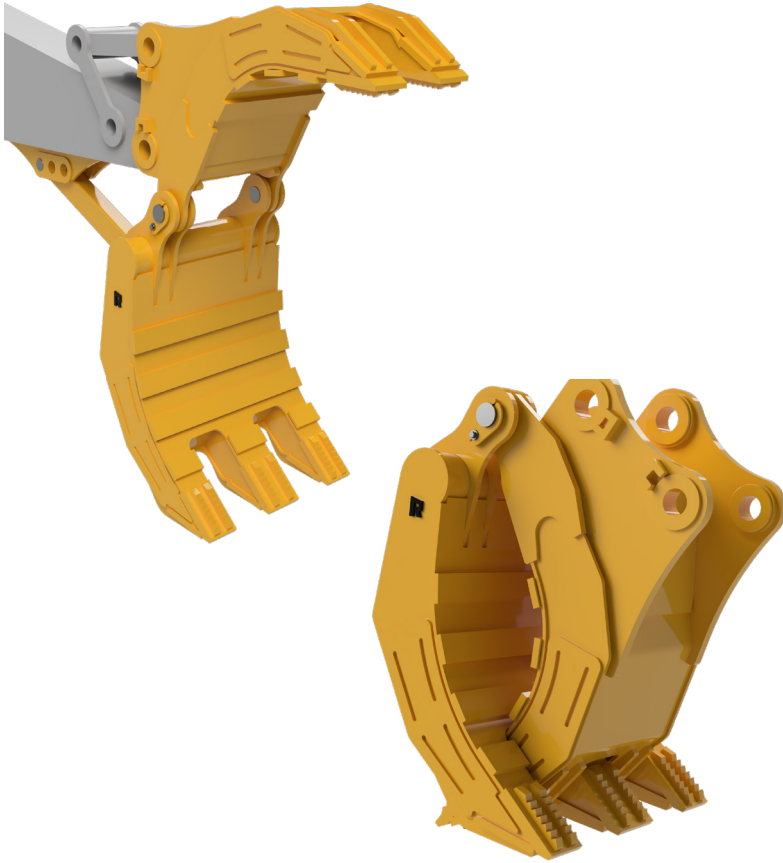




# EXTREME DUTY H23 GRAPPLE

TAKE HOLD OF YOUR HARSHTEST  
WORKING CONDITIONS



## QUICKLY AND EFFECTIVELY HANDLE ROCK, BOULDERS, AND TACKLE HEAVY-DUTY DEMOLITION WORK

- Tine tip serrations and heavy-duty rock strips on face of grapple maximize gripping power while preventing wear.
- Narrow two-tine top clamp and three-tine bottom clamp maximizes gripping and ripping power.
- Independent pivot pins eliminate grapple halves from separating when removed – saving time and increasing safety during install and removal.
- Easily used with an excavator coupler due to independent pivot design.
- Complete AR400 wear package and enhanced structural bracing make this the strongest, most rugged grapple on the market.

### Specifications\*

MACHINE OPERATING WEIGHT (LBS.)	Max Opening (In.)	Min Opening (In.)	Height Closed (In.)	Upper Jaw Width (In.)	Lower Jaw Width (In.)	Weight (Lbs.)
52,001-70,000	115	11	72	45	31	4,570
70,001-90,000	118	13	75	49	33	6,605
90,001-110,000	145	15	83	53	35	9,080
110,001-160,000	155	15	90	60	39	11,865
160,001-200,000	159	16	93	61	39	13,380

Proudly Made in USA

\*Specifications subject to change without notice.

**WARRANTY** Rockland Extreme Duty H23 Grapples are guaranteed against failure due to defective design, materials, or workmanship for a period of two years or 4,000 hours.

[WWW.ROCKLANDMFG.COM](http://WWW.ROCKLANDMFG.COM) | [SALES@ROCKLANDMFG.COM](mailto:SALES@ROCKLANDMFG.COM) | 1-800-458-3773