



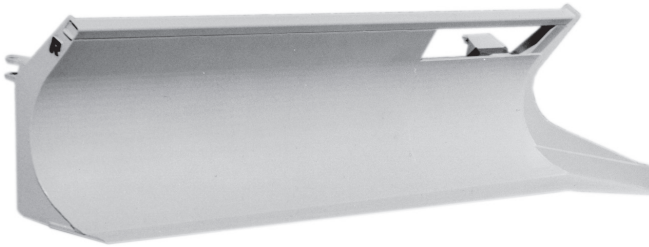
# CLEARING EQUIPMENT

CLEARING BLADES

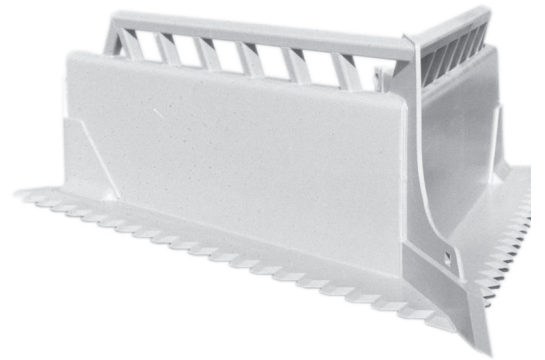
CHOPPERS

ROOT PLOWS TREE BOOMS

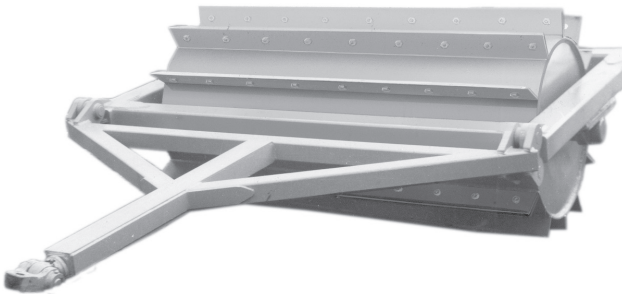
SA-4 SHEAR BLADE



VR CLEARING BLADE



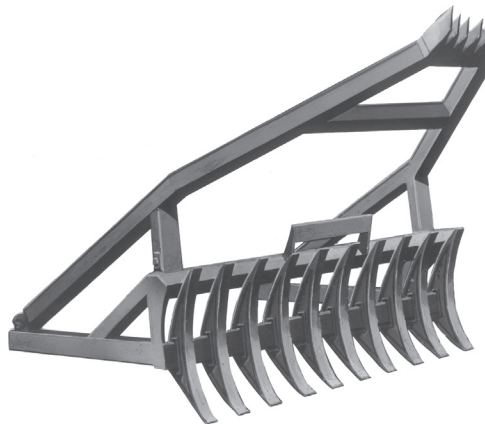
RC ROLLING CHOPPER



RP ROOT PLOW



TB-3 TREE BOOM



## SA-4 SHEAR BLADE -- TOUGH, VERSATILE

The Rockland SA-4 Shear Blade has proven itself around the world. Contractors specify the Rockland SA-4 because they know it is both productive and dependable. Productivity starts at the heavy-duty splitter and continues the entire length of the high-strength, heat-treated cutting edge. Rockland SA-4 Shear Blades out-cut the competition because of Rockland's field-proven 30° cutting angle. The cutting edge is double beveled for maximum penetration which means fewer splitting passes. The SA-4 is dependable. It is built to take all the abuse a land clearing job can dish out. Such features as heat-treated cutting edges, high-strength, alloy steel construction, and built-in brushguard guarantee years of dependable service. The SA-4 is truly designed to produce and built to last. Join thousands of satisfied contractors and equip your tractor with the best—the Rockland SA-4 Shear Blade.

### SA-4 SHEAR BLADE SPECIFICATIONS

Machine Category	30		40		50		60	
Mounted Width (")	<b>134</b>	3404	<b>145</b>	3683	<b>145</b>	3683	<b>160</b>	4064
Overall Height (")	<b>54</b>	1372	<b>54</b>	1372	<b>64</b>	1626	<b>64</b>	1626
Weight (lbs.)	<b>5100</b>	2313	<b>5500</b>	2495	<b>6400</b>	2903	<b>7350</b>	3334

### LGP SPECS

Machine Category	30		40	
Mounted Width (")	<b>167</b>	4242	<b>167</b>	24242
Overall Height (")	<b>54</b>	1372	<b>54</b>	1372
Weight (lbs.)	<b>5350</b>	2427	<b>6150</b>	2790

(mm/kg)

Specifications subject to change without notice.

### INSTALLATION INFORMATION

The SA-4 Shear Blade mounts on an outside mounted C-frame with brace group.

## VR CLEARING BLADES -- RUGGED, PROTECTIVE

Rockland VR Clearing Blades are rugged and productive. These units put trees and brush on the ground in a hurry. The "V" design provides maximum shearing action while the tractor moves forward at a steady pace. The tough, center-mounted splitter makes short work of large trees that cannot be sheared off in a single pass. VR Clearing Blades are a complete trunnion-mounted unit. The push arms and cross-frame are built entirely of high-strength alloy steels, and are reinforced at all critical stress areas. The push frame runs from the trunnions all the way to the splitter so that splitting forces are evenly distributed back to the tractor. The cutting edges and splitter are manufactured from heat-treated alloy steel plate for years of dependable service. In addition, the edges are double beveled for maximum penetration and shearing action. The moldboard is reinforced for heavy tree pushing, and the built-in brushguard is made for severe land clearing service. If your application calls for a V-blade, specify the Rockland VR Clearing Blade.

### SPECIFICATIONS

Machine Category	20		25		30		40		50		60		70	
Cutting Width (")	<b>108</b>	2743	<b>132</b>	3353	<b>132</b>	3353	<b>136</b>	3454	<b>144</b>	3658	<b>168</b>	4267	<b>180</b>	4572
Height w/Brushguard (")	<b>40</b>	1016	<b>48</b>	1219	<b>48</b>	1219	<b>52</b>	1321	<b>56</b>	1422	<b>60</b>	1524	<b>60</b>	1424
Blade Width (")	<b>12</b>	305	<b>14</b>	356	<b>14</b>	356	<b>16</b>	356	<b>18</b>	457	<b>21</b>	533	<b>21</b>	533
Blade Thickness (")	<b>5/8</b>	16	<b>3/4</b>	19	<b>3/4</b>	19	<b>1</b>	19	<b>1-1/4</b>	32	<b>1-1/4</b>	32	<b>1-1/4</b>	32
Weight (lbs.)	<b>3975</b>	1805	<b>7400</b>	3360	<b>7400</b>	3360	<b>10500</b>	3360	<b>13500</b>	6129	<b>14500</b>	6583	<b>16500</b>	7491

(mm/kg)

Specifications subject to change without notice.

### INSTALLATION INFORMATION

Rockland VR Clearing Blades mount on standard trunnions and use standard lift cylinders. Push beams are not required. Some VR Blades are shipped in two pieces to avoid overwide load classification and excessive freight charges. Blades can be assembled by two men in one to two days. Welding is required for assembly.

# RC ROLLING CHOPPERS -- BUILT TO LAST

These features have made Rockland choppers famous: heavy-duty box frame, doubler plates at all critical stress areas, massive axle bearings, frame over axle design for maximum clearance, hinged drawbar for transportation needs, and heavy-duty swivel hitch. Whether it be a single drum unit or a multi-drum model, specify a Rockland RC Rolling Chopper for years of dependable, trouble-free chopping. Multi-drum models have two extra blades on the rear drum to prevent tracking. Multi-drum arrangements are recommended for chopping and killing light to medium growth.

## RC ROLLING CHOPPER SPECIFICATIONS

Model / Category	C-6/10	C-7/10,20	C-8/25	C-10/25,30	C-12/30,40	C-14/40,50	C-16/50&up
Cutting Width (")	72 <small>1829</small>	84 <small>2134</small>	96 <small>2438</small>	120 <small>3048</small>	144 <small>3658</small>	168 <small>4267</small>	192 <small>4877</small>
Overall Width (")	88 <small>2235</small>	104 <small>2642</small>	120 <small>3048</small>	144 <small>3658</small>	168 <small>4267</small>	192 <small>4877</small>	216 <small>5486</small>
Drum Diameter (")	36 <small>914</small>	48 <small>1219</small>	60 <small>1524</small>	60 <small>1524</small>	60 <small>1524</small>	60 <small>1524</small>	72 <small>1829</small>
Blade Size	3/4x6 <small>19x152</small>	3/4x6 <small>19x152</small>	1x10 <small>25x254</small>	1x10 <small>25x254</small>	1x10 <small>25x254</small>	1x10 <small>25x254</small>	1x10 <small>25x254</small>
Number of Blades	10	10	12	12	12	12	12
Welded Blades							
Drum Empty Weight (lbs.)	4700 <small>2131</small>	8100 <small>3674</small>	12100 <small>5489</small>	14600 <small>6623</small>	17400 <small>7893</small>	20000 <small>9072</small>	33600 <small>15241</small>
Drum Full Weight (lbs.)	7700 <small>3493</small>	14800 <small>6713</small>	21800 <small>9888</small>	28300 <small>12837</small>	34300 <small>15558</small>	38500 <small>17469</small>	62100 <small>28169</small>
Reversible Blades							
Drum Empty Weight (lbs.)	5200 <small>2359</small>	9300 <small>4218</small>	14400 <small>6532</small>	17200 <small>7802</small>	20600 <small>9344</small>	23800 <small>10796</small>	41200 <small>18688</small>
Drum Full Weight (lbs.)	8200 <small>3720</small>	15500 <small>7031</small>	22190 <small>10065</small>	29700 <small>13472</small>	36100 <small>16375</small>	40400 <small>18325</small>	68700 <small>31162</small>

(mm/kg)

Specifications subject to change without notice.

## RECOMMENDED HORSEPOWER PER CHOPPER

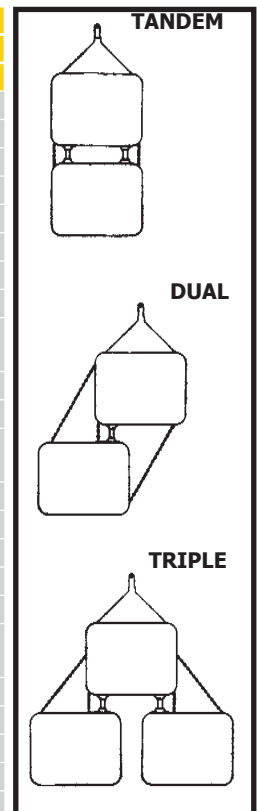
Model / Category	C-6/10	C-7/10,20	C-8/25	C-10/25,30	C-12/30,40	C-14/40,50	C-16/50&up
Single Drum Models Tractor Drawbar HP Required	35-50	50-75	100-130	130 Up	185 Up	230 Up	270 Up
Tandem Drum Models Tractor Drawbar HP Required	50 Up	100 Up	185 Up	260 Up	--	--	--
Triple Drum Models Tractor Drawbar HP Required	75 Up	155 Up	--	--	--	--	--

## MULTI-DRUM ROLLING CHOPPER SPECIFICATIONS

Models:	Tandem	C-26	C-27	C-28	C-210
Dual	CD-26	CD-27	CD-28	CD-210	
Triple	C-36	C-37	C-38	N/A	
Cutting Width: Tandem (")	72 <small>1829</small>	84 <small>2134</small>	96 <small>2438</small>	120 <small>3048</small>	
Dual (")	132 <small>3353</small>	156 <small>3962</small>	180 <small>4572</small>	228 <small>5791</small>	
Triple (")	192 <small>4877</small>	228 <small>5791</small>	264 <small>6706</small>	N/A	
Overall Width: Tandem (")	96 <small>2438</small>	108 <small>2743</small>	120 <small>3048</small>	144 <small>3658</small>	
Dual (")	156 <small>3962</small>	180 <small>4572</small>	204 <small>5182</small>	252 <small>6401</small>	
Triple (")	216 <small>5486</small>	252 <small>6401</small>	288 <small>7315</small>	N/A	
Drum Diameter (")	36 <small>914</small>	48 <small>1219</small>	60 <small>1524</small>	60 <small>1524</small>	
Blade Size	3/4x6 <small>19x152</small>	3/4x6 <small>19x152</small>	1x10 <small>25x254</small>	1x10 <small>25x254</small>	
Number of Blades:					
Tandem	22	22	26	26	
Dual	20	20	24	24	
Triple	30	30	36	N/A	
Weight-Empty-(lbs.)					
Std. Blades Tandem	9100 <small>4128</small>	14900 <small>6759</small>	20600 <small>9344</small>	27900 <small>12655</small>	
Std. Blades Dual	9085 <small>4121</small>	14870 <small>6745</small>	20545 <small>9319</small>	27850 <small>12633</small>	
Std. Blades Triple	14650 <small>6645</small>	21900 <small>9934</small>	29750 <small>13495</small>	N/A	
Rev. Blades Tandem	10100 <small>4581</small>	16300 <small>7394</small>	22600 <small>10251</small>	30700 <small>13926</small>	
Rev. Blades Dual	10085 <small>4575</small>	16270 <small>7380</small>	22565 <small>10235</small>	30650 <small>13903</small>	
Rev. Blades Triple	16150 <small>7326</small>	24000 <small>10886</small>	32750 <small>14855</small>	N/A	
Weight-Full-(lbs.)					
Std. Blades Tandem	13500 <small>6124</small>	22800 <small>10342</small>	37890 <small>17187</small>	54985 <small>24942</small>	
Std. Blades Dual	13465 <small>6108</small>	22770 <small>10328</small>	37845 <small>17166</small>	54935 <small>24919</small>	
Std. Blades Triple	21250 <small>9639</small>	33750 <small>15309</small>	55685 <small>25259</small>	N/A	
Rev. Blades Tandem	14500 <small>6578</small>	24200 <small>10977</small>	39890 <small>18094</small>	57785 <small>26211</small>	
Rev. Blades Dual	13465 <small>6108</small>	24170 <small>10964</small>	39845 <small>18074</small>	57735 <small>26189</small>	
Rev. Blades Triple	22750 <small>10319</small>	35850 <small>16262</small>	58685 <small>26620</small>	N/A	

(mm/kg)

Specifications subject to change without notice.



## RP ROOT PLOWS -- IMPROVE UNPRODUCTIVE LAND

Rockland RP Root Plows improve brush-infested, arid land by slicing roots off below the surface. Undesirable brush is killed while the soil is loosened and opened. This facilitates seeding and moisture retention. Unproductive brushland is turned into valuable grassland and the RP Root Plow gets the job done in a single pass! Rockland Root Plows are hydraulically controlled. The rugged pullframe and cutting edge assembly are built of high-strength, weight-saving, alloy steel. The bolt-on cutting edges are made from heat-treated alloy steel for maximum cutting edge life. RP Root Plows have been proven around the world. If you need to improve arid land, specify a Rockland RP Root Plow.

### SPECIFICATIONS

Machine Category	25	30	40	50	60	70
Cutting Width (")	<b>96</b> 2438	<b>96</b> 2438	<b>120</b> 3048	<b>144</b> 3658	<b>168</b> 4267	<b>192</b> 4877
Cutting Depth (")	<b>0-30</b> 0-762	<b>0-30</b> 0-762	<b>0-30</b> 0-762	<b>0-30</b> 0-762	<b>0-36</b> 0-914	<b>0-36</b> 0-914
Blade Width (")	<b>24</b> 610	<b>24</b> 610	<b>24</b> 610	<b>30</b> 762	<b>30</b> 762	<b>30</b> 762
Blade Thickness (")	<b>3/4x10</b> 19x254	<b>3/4x10</b> 19x254	<b>1x12</b> 25x305	<b>1x12</b> 25x305	<b>1x16</b> 25x406	<b>1x16</b> 25x406
Weight (lbs.)	<b>7200</b> 3266	<b>7800</b> 3538	<b>10200</b> 4627	<b>11900</b> 5398	<b>12700</b> 5761	<b>15000</b> 6804

(mm/kg)

Specifications subject to change without notice.

### INSTALLATION INFORMATION

The RP Root Plow comes complete with lift cylinders, jumper hoses, pull frame, auxiliary trunnions and cutting edge assembly. The pull beams connect to trunnions. The tractor must be equipped with auxiliary valve and hydraulic lines to the rear of the machine.

## TB TREE BOOMS -- KING OF THE JUNGLE

Rockland TB Tree Booms are the most efficient method of land clearing when both trees and roots have to be removed. Rockland TB Tree Booms multiply tractor horsepower by leverage so that large trees are quickly pushed over and root systems exposed for easy removal. Rockland TB Tree Booms are usually mounted in conjunction with a rake or a dozer blade. Rakes are recommended if the tractor will be used for tree removal and stacking, in addition to pushing trees. The TB is built for jungle-duty land clearing. High-strength alloy steel box sections are used throughout. TBs are jungle tough and jungle proven. If your clearing job requires complete tree removal, specify the Rockland TB Tree Boom.

### SPECIFICATIONS

Machine Category	20	25	30	40	50	60
Beam Height (")	<b>132</b> 3353	<b>162</b> 4115	<b>162</b> 4115	<b>192</b> 4877	<b>216</b> 5486	<b>240</b> 6096
Distance Forward of Rake (")	<b>96</b> 2438	<b>120</b> 3048	<b>120</b> 3048	<b>132</b> 3353	<b>156</b> 3962	<b>156</b> 3962
Beam Width (")	<b>42</b> 1067	<b>42</b> 1067	<b>42</b> 1067	<b>48</b> 1219	<b>48</b> 1219	<b>48</b> 1219
Weight (lbs.)	<b>1600</b> 726	<b>2200</b> 998	<b>3000</b> 1361	<b>4200</b> 1905	<b>6600</b> 2994	<b>7700</b> 3493

(mm/kg)

Specifications subject to change without notice.

### INSTALLATION INFORMATION

TB Tree Booms are designed to mount on standard push beams and dozer blades. If a rake is to be used, or if trunnion mounting for use without a rake or a blade is desired, it must be specified when ordered.

### WARRANTY

Rockland SA-4 Shear Blades, VR Clearing Blades, Rolling Choppers, Root Plows, and Tree Booms are guaranteed against failure due to defective design, materials, or workmanship for a period of two years or 4,000 hours.



Distributed by:

**ROCKLAND MANUFACTURING CO.**  
**P O BOX 5** **BEDFORD, PA 15522**  
**800-458-3773** **www.rocklandmfg.com**