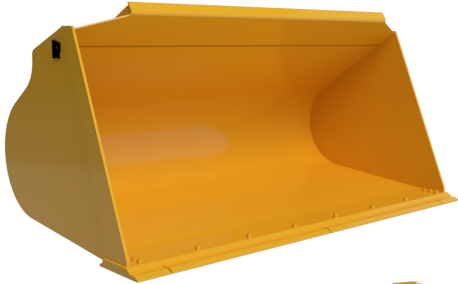




SNOW BUCKETS

LOAD MORE SNOW ON EVERY PASS!



STANDARD

**PERFORMANCE
STYLE**



MOVE LARGE VOLUMES OF SNOW AND ICE WITH EASE!

- Ideal for clearing piles of snow with heavy concentrations of ice
- Slope-bottom design and replaceable wear plates extend bucket life
- Lightweight, high-strength alloy steel construction delivers years of dependable performance
- Choose the standard design equipped with straight sidecutters or performance style with rounded sidecutters
- Equipped with reversible, bolt-on cutting edges

Specifications*

RECOMMENDED CAPACITY RANGES (CU. YD.)

MACHINE STRAIGHT TIP LOAD (LBS.)	Up to 2.5	2.5-4	4-5	5-6	6-7	7-8	8-10	10-11	11-14	14-15	15-18	18-20
	Up to 8,600	■										
8,601-12,800	■	■										
12,801-16,700		■	■									
16,701-23,800			■	■								
23,801-27,000			■	■	■							
27,001-34,000				■	■	■						
34,001-42,500							■	■				
42,501-54,000								■				

Proudly Made in USA

*Specifications subject to change without notice.

WARRANTY Rockland Snow Buckets are guaranteed against failure due to defective design, materials, or workmanship for a period of two years or 4,000 hours.

WWW.ROCKLANDMFG.COM | SALES@ROCKLANDMFG.COM | 1-800-458-3773