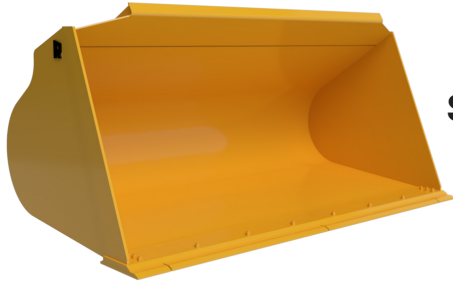




LIGHT MATERIAL BUCKETS

MAXIMIZE YOUR MACHINE'S CAPABILITIES
ON EVERY PASS!



STANDARD

**PERFORMANCE
STYLE**



**PERFECT FOR MULCH,
WOOD CHIPS, DRY TOPSOIL,
FERTILIZER, AND LIVESTOCK
FEED APPLICATIONS**

- Move as much as your machine can handle, every time
- Slope-bottom design and replaceable wear plates extend bucket life
- Lightweight, high-strength alloy steel construction delivers years of dependable performance
- Choose the standard design equipped with straight sidecutters or performance style with rounded sidecutters
- Equipped with reversible bolt-on cutting edges

Specifications*

RECOMMENDED CAPACITY RANGES (CU. YD.)

MACHINE STRAIGHT TIP LOAD (LBS.)

	Up to 2.5	2.5-4	4-5	5-6	6-7	7-8	8-10	10-11	11-14	14-15	15-18	18-20
Up to 8,600	█											
8,601-12,800	█	█										
12,801-16,700		█	█									
16,701-23,800			█	█								
23,801-27,000			█	█	█							
27,001-34,000				█	█	█	█					
34,001-42,500							█	█				
42,501-54,000								█	█	█		
54,001-64,000										█	█	
64,001-79,000										█	█	█

Proudly Made in USA

*Specifications subject to change without notice.

WARRANTY Rockland Light Material Buckets are guaranteed against failure due to defective design, materials, or workmanship for a period of two years or 4,000 hours.

WWW.ROCKLANDMFG.COM | SALES@ROCKLANDMFG.COM | 1-800-458-3773