



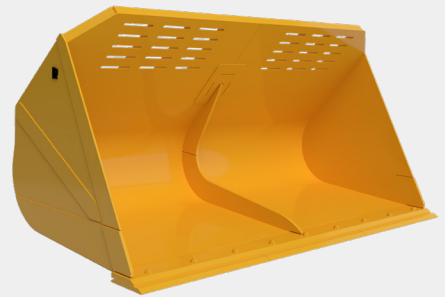
# TRASH HANDLING BUCKET

LOAD MORE TRASH ON EVERY PASS



## MAXIMUM PERFORMANCE AND DURABILITY IN WASTE MANAGEMENT APPLICATION

- Replaceable, over-sized cheek plates and thick, lower corner blocks protect against damage from rubbing transfer station walls.
- Clipped corners increase visibility and prevent hang-ups on truck beds, building columns, metal siding, walls, and floors.
- High-strength, alloy steel design extends bucket life while adding capacity and reducing bucket weight.
- Easily replaceable, bolt-on skid shoes reduce bottom wear.
- Equipped with reversible, bolt-on steel cutting edges or rubber edges of your choice.
- Additional trash guards, wear parts, liners, and other options available upon request.



## Specifications\*

LOADER SIZE BY STRAIGHT TIP LOAD (LBS)	CAPACITY (CU. YD.)	WIDTH (IN)	WEIGHT (LBS)
16,701 - 27,000	5.0	120	3,480
	5.5	120	3,680
23,801 - 34,000	6.0	120	4,600
27,001 - 34,000	6.5	136	5,075
	7.0	136	5,150
	7.5	136	5,235

Proudly made in the USA

\*Specifications subject to change without notice.

**WARRANTY** Rockland Trash Handling Bucket are guaranteed against failure due to defective design, materials, or workmanship for a period of two years.



# TRASH HANDLING BUCKET

LOAD MORE TRASH ON EVERY PASS

## Specifications\*

LOADER SIZE BY STRAIGHT TIP LOAD (LBS)	CAPACITY (CU. YD.)	WIDTH (IN)	WEIGHT (LBS)
34,001 - 42,500	8.0	144	6,025
	8.5	144	6,325
	9.0	144	6,930
	9.6	158	7,030
	10.0	158	7,130
	10.5	158	7,410
34,001 - 54,000	11.0	168	7,510
42,501 - 54,000	11.5	168	7,675
	12.0	178	7,875
	12.5	178	7,975
	13.0	178	8,220
	13.5	178	8,300
42,501 - 64,000	14.0	178	9,725
	14.5	178	9,925
54,001 - 64,000	15.0	178	10,125

 Proudly made in the USA

\*Specifications subject to change without notice.

**WARRANTY** Rockland Trash Handling Bucket are guaranteed against failure due to defective design, materials, or workmanship for a period of two years.